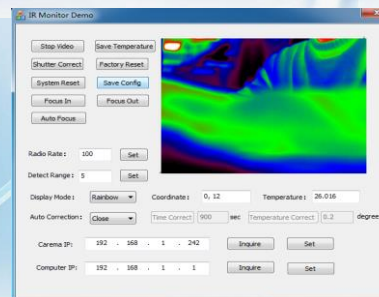
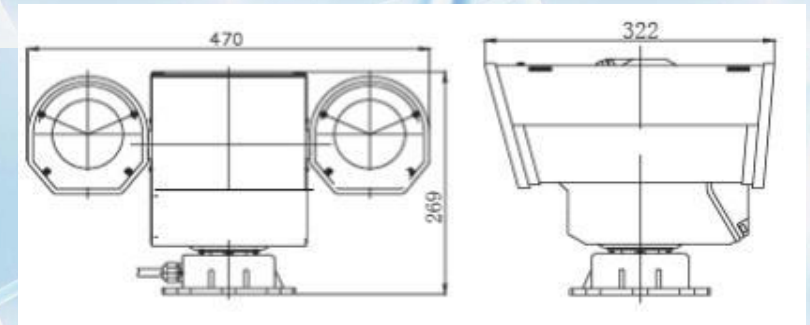


# MATT SERIES – CAR IR 2707



**Vehicular Pan & Tilt / Thermal imaging system  
for inspection of electric power installations**

- Large turning range: 360° horizontal, -90° to +90° vertical
- Double cameras: IR thermography camera and visible camera
- Industrial IP67 design fit for harsh operation environment
- Robust and anti-vibration design for vehicle installation
- Easy operation for hardware and software
- Thermocom detector core used in thermography cameras
- Monitor screen integrated to control panel



# Specifications

Pan & Tilt System	
Housing shielding design	Conform to IP66, suitable for harsh environmental; all-weather shielding housing; lightning-proof of 4000V;
Anti-vibration design	The vibration absorbing structure is used, it is specially designed for the application on the top of motors
Environmental temperature range	-40°C to 60°C
Environmental humidity	0-95%
Horizontal turning range	360 degree
Vertical turning range	180 degree
Horizontal turning speed	0-100degree/Second
Vertical turning speed	0-80 degree/Second
Power sourcing	12V and 24 V AC/DC
Controller	Joystick controller
Software	English operation menu; other optional languages could be supported
Cameras and windows	The 80x80x200mm cameras could be installed and Germanium windows of 60mm are used.
Communication Protocol	PELCO/KALATEL/SAMSUNG/DIAMOND, 16 Types are available
Baud Rate (RS485)	2400/4800/9600/19200bps
Dimension (mm)	470 x 322 x 269

Infrared Thermography Camera	
Detectors	VOX_320x240
Imaging size	38umx38um
Wavelength range:	8μm~14μm
Lens focus: ,	f = 21mm
f number:	1.2
FOV:	32°x24°
Temperature Range:	-20°C~1200°C
Temperature Measuring accuracy:	±2°C or ±2%
Temperature resolution:	0.1°C
Video output:	CCIR standard video signal;
Network:	100M
Functions	Shutter Calibration; Auto Calibration; Pseudo color Display; Temperature Measuring; Distance setting Emissivity Setting Auto Focusing
Digital Video specifications	Frame frequency: ≥ 1HZ; Resolutions: 320x240; Data width: 16bit;
Operation temperature range	-20°C~50°C
Storing temperature range:	-25°C~55°C