

Parameters

ITEMS	TH3	TH7	
Detector characteristics	Detector type	Uncooled FPA microbolometer	
	Array size/format	160x120	384x288
	Field of view/min focus distance	25°<-<25°/0.3m	25°<-<19°/0.1m
	Thermal Sensitivity (NEDT)	<0.08°C@30°C	<0.06°C@30°C
	Spatial resolution (IFOV)	2.73mrad	1.37mrad
Image characteristics	Frame frequency	50/60Hz	
	Focus	Manual	
	Zoom	x2	
	Spectral range	8-14um	
	Built-in CCD camera	COMS camera modules	
	Image display	LCD display	2.7" TFT LCD, 320 x 240 (3.5" optional)
Temperature ranges		-20°C ~ +350°C (650 °C opt)	-20°C ~ +600°C (1200°C optional)
Accuracy		±2°C or ±2% of reading, whichever's greater	
Measurement correction		Automatic / manual / Temperature Interval of use from 0°C to 50°C	
Measurement	Measurement mode	Up to 4 movable spots. Up to 3 movable areas (maximum, minimum and average temperatures). Up to 2 movable lines. Line profile. Isotherms. Temperature difference. Alarms (voice, color)	
	Image control	Color palette 11palettes changeable Image adjustment Auto/manual gain and brightness	
	Setup functions	Date/time, temperature unit, language	
	Emissivity correction	Variable from 0.01 to 1.0	
	Background temperature correction	Automatic corrections according to user input	
	Atmospheric transmission correction	Automatic correction according to user input object distance humidity and temperature	
Image storage	Storage card	2 GB SD Card with Mini SD adapter, max 16 GB (> 5000 images)	
	Storage mode	Manual/Auto single file saving, IR and Visual image link saving	
	File format	Thermal: JPEG with original thermal measurement data included Visual: JPEG	
	Voice annotation	A built-in microphone up to 60 seconds of digital voice clip with each cared thermal imaging	
Laser pointer	Laser locator	Class 2, 1mw/635nm (red), IEC 60 285	
Power source	Battery type	Li-Ion, rechargeable	
	Battery operating time	3 hours continuous operation	
	Battery charging mode	intelligent charger or power adapter 12V (optional) to random charge	
	Power saving	Auto dormancy and auto-shut down	
	External power	10-15V DC	
Environment	Operating temperature	-15°C~ +50°C	
	Humidity	±90% non-condensing	
	Encapsulation	IP54	
	Drop resistant	2m	
Physical characteristics	Weight	1kg	
	Dimension	105<-<245<-<230mm / Hand / Neck strap / Rigid Carrying Case	
	Memory slot	Micro SD card slot	
Interface	External DC input	YES	
	Video output	YES	
	USB	Image, measurement data transfer	

The information contained in this document is subject to change without notice

Analysis Software- Free of Charge
The images shot by TH3 & TH7 could be downloaded quickly, and imported to the analysis software to create WORD-FORM report for all the graphic data analysis.



Applications in Electrical & Mechanical industries

- Security Detection
- Loose Interface Detection
- Defective Components
- Insulation Failure
- HVAC Defective
- Repair Verification

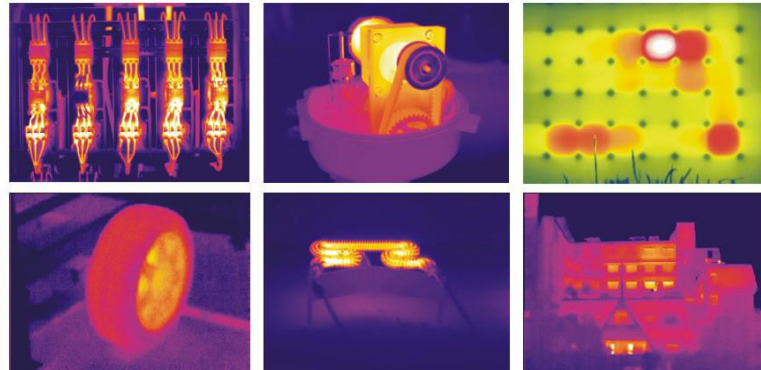


Applications in the Building Industry

- Fast Scan Exterior Wall of the Buildings
- Make Accurate Predictive Maintenance Inside Buildings by finding the Exact Locations of Water and Heat Leakages



Analysis of Temperature Distribution of High and Low, Temperature Uniformity, Temperature Changes in Other Industries such as Architecture, Electronics, and Research & Development.



Thermocom, Inc.

17 Topaz Drive, Nashua, NH 03062

Phone/Fax: 1-603-888-6806

Email: service@thermocom1.com

Thermo
COM
Thermography
Solutions

HANDHELD COST-EFFECTIVE TOOL-LIKE THERMAL IMAGING CAMERA
— First Choice for Preventive Maintenance
TH3/TH7



www.thermocom1.com