

Infrared Cameras PJ384 & PJ640



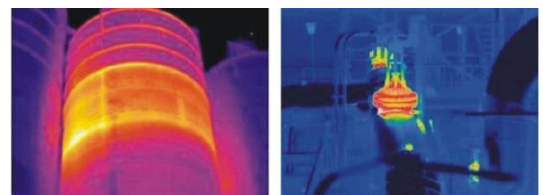
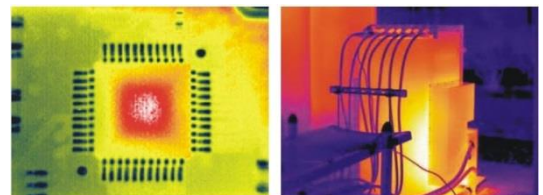
THERMOCOM PJ384 & PJ640 provide high performance with cutting-edge thermal imaging technology with visual camera, interchangeable lens, large 5" foldable and rotatable LCD, manual & auto focus.

Thermal imaging cameras PJ384 & PJ640 are equipped with ergonomic design, super image quality, multiple measurements, providing powerful assistance for thermographers to have the most efficient instrument for predictive maintenance inspections. THERMOCOM PJ384 & PJ640 have a wide range temperature measurement to satisfy variety of thermograph applications, they enable you to identify the small temperature difference that could cause big problems.

Features

- High IR resolution
- Excellent thermal image and high accuracy temperature measurement
- Folding 5" and 270° rotatable display
- Auto/Motor focus for one-hand operation
- Bright LED light, Laser pointer
- Built-in digital camera
- Interface RS232, USB, and a Wide temperature measurement range
- 60sec voice annotation
- Interchangeable IR lens
- Scalable P-1-P and Thermal fusion
- Multiple Measurement
- Real-time thermal video transfer to PC via USB, and remote transfer via MSN and Skype
- New generation IRSee analysis software

Applications



Technical Specifications

Item	PJ384	PJ640
Detector Data		
- Detector type	Uncooled FPA	Uncooled FPA
- J/R resolution	384 X 288	640X480
- Pixel pitch	25 µm	25 µm
- Spectral range	7.5 - 14µm	7.5 - 14µm
Image Performance		
- FOV/Min focus distance	24° X 8° / 0.4m 48° X 36° / 0.3m 14" X 10" / 0.8 m	24° X 8° / 0.5 m standard / 30° X 21° (optional) 48° X 36° / 0.3 m 14" X 10" / 0.8 m
- IFOV	1.3 mrad (24° X 18°)	0.6 mrad (24° X 18°)
- NETD/Sensitivity	<80mk@30° C	<65mk@30° C
- Frequency	50Hz/60Hz	50Hz/60Hz
- Focus	Manual/Motor/Auto 1,	Manual/Motor/Auto 1,
- Digital Zoom	8X continuous / 32X	8X continuous / 32 X
- Visual camera	5.0 mega pixel	8.0 mega pixel
- Spotlight	10 cd/m²	10 cd/m²
- Image mode	Thermal image, visual images, P+P, thermal fusion, W+W	Thermal image, visual images, P+P, thermal fusion, W-1-W
Image Display		
- Viewfinder	0.6" color OLED, with magnification	0.6" color OLED, with magnification
- Display	5", 270° tiltable LCD, 800x480 pixels	5", 270° tiltable LCD, 800x480 pixels
Measurement		
- Temperature range	-40 °C - 600 °C (Standard) -40 °C - 1200C (optional)	-40 °C ... 600 c (standard) -40 °C ... 1200 °C (optional)
- Temperature accuracy	±2% or ±2% of reading	±1°C or ±1% up to 120° of reading
- Measurement correction	Auto/Manual	Auto/Manual
- Spot meter	10 adjustable spots	10 adjustable spots
- Area	5 adjustable areas with max./min./avg temperature value	5 adjustable areas with max./min./avg temperature value
- Line profile	Vertical/Horizontal	Vertical/Horizontal
- Isotherms analysis	Capture high/low temperature /interval Yes	Capture high/low temperature /interval Yes
- Delta T	Adjustable from 0.01to 1.0 or selected from list of materials	Adjustable from 0.01to 1.0 or selected from list of materials
- Emissivity correction	Voice, color	Voice, color
- Alarm	Yes	Yes
- Dew point alarm	12 pallets (Including iron, rainbow, white hot and black hot etc.) Adjust contrast and brightness auto/manual	12pallets (Including iron, rainbow, white hot and black hot etc.) Adjust contrast and brightness auto/manual
- Color Palletes	Date/time, temperature unit °C/°FK, language Auto	Date/time, temperature unit °C/°FK, language Auto
- Image adjustment	Auto	Auto
- Setting function	10 Languages (English, French, Italian, German, Spanish, Portuguese, Russian, Korean, Japanese, Simplified Chinese & Traditional Chinese)	10 Languages (English, French, Italian, German, Spanish, Portuguese, Russian, Korean, Japanese, Simplified Chinese & Traditional Chinese)
- Background temperature correction		
- Atmospheric transmissivity correction		
- Languages	Built-in flash card, up to 2800 radiometric JPEG images 8G SD card, up to >22400 radiometric JPEG images	Built-in flash card, up to 700 radiometric JPEG images 8G SD card, up to >S600 radiometric JPEG images
Image Storage		
- Storage type	60s voice record, stored with per image via built-in microphone. User defined, 10s at least	60s voice record, stored with per image via built-in microphone. User defined, 10s at least
- Voice annotation		
- Periodic image storage		
Laser Point		
- Grade/Type	Class 2, mW/635nm Red	Class 2, mW/635nm Red
Power System		
- Battery type	Rechargeable and replaceable li-ion battery	Rechargeable and replaceable li-ion battery
- Battery operation time	2.5 hours	25 hours
- Charging System	In camera, AC adapter, car charger	In camera, AC adapter, car charger
- AC supply	110°240V AC, 50/60Hz, 10 - 15 V DC output	110°240V AC, 50/60Hz, 10-15V DC output
- Power saving	Auto shutdown (user defined)	Auto shutdown (user defined)
Environment Parameters		
- Operation temperature	-20 °C +60 °C	-20 °C +60 °C
- Storage temperature	-40 °C +70 °C	-40 °C +70 °C
- Humidity	: 95% (Non-condense)	95% (Non-condense)
- Encapsulation	IP54 (IEC60529) 2SG,	IP54 (IEC60529) 2SG,
- Shock	IEC60068-2-2g	IEC60068-2-2g
- Vibration	2G, IEC60068-2-6	2G, IEC60068-2-6
Physical Data		
- Weight	1.3Kg (with battery and standard lens)	1.3Kg (with battery and standard lens)
- Size(L X W X H)	200* 117* 127mm	200*117*127mm
Interfaces		
- USB	Radiometric images transfer to and from PC	Radiometric images transfer to and from PC
- Bluetooth	Yes	Yes
- Video output	CVBS	CVBS
- Audio output	Yes	Yes
- Power	Yes	Yes
- Tripod	1/4" 20	1/4" 20
Packing		
- Standard	Thermal imaging camera with standard IR lens, 2 Li-ion batteries, Battery charger, Adapter, USB cable, SD card, SD card reader, Software CD, warranty card, transport case	Thermal imaging camera with standard IR lens, 2 Li-ion batteries, Battery charger, Adapter, USB cable, SD card, SD card reader, Software CD, warranty card, transport case