

Thermal Imaging Camera

TE Series

160 x 120 Uncooled FPA detector

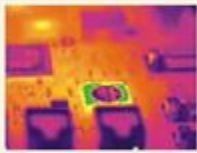
Low cost, small size

50 / 60Hz real-time measurement



TE series Portable Thermal Imaging Camera

TE series is a special low cost real-time IR camera in a 160 x 120 resolution. It combines the traits of economical, practical, and portable. The camera symbolizes easy-to-use, standard and professional, designed and developed for those applications that need instant infrared troubleshooting in power plants, petrochemicals, R & D, firefighting, building inspection, metallurgy, etc.



Color Alarm



Beep

Voice Alarm

40 seconds of digital voice per image stored with image

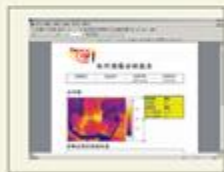


Low power consumption,
3 hours continuous operation

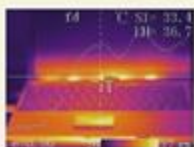


Laser Pointer

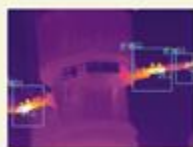
Manual Lens



Free analysis software



Line measurement



Area measurement



Optional Lenses

Parameters

ITEM		TE-1	TE-P1	
Detector Characteristics	Detector type	Uncooled FPA microbolometer		
	Array size/format	160 x120		
Image Characteristics	Field of view/min focus distance	18°x13°/0.3m		
	Spatial resolution (IFOV)	1.9mrad		
	Thermal sensitivity	≤0.1°C@30°C		
	Frame rate	60Hz	50/60Hz	
	Focus	Manual		
	Electronic	N/A	2X	
	Spectral range	8 ~ 14 um		
Image display	LCD	Built-in high-resolution color 2.5" LCD		
Measurement	Temperature ranges	-20°C ~ +350°C	-20°C ~ +350°C optional up to +600°C	
	Accuracy	±2°C or ±2% of reading, Whichever is greater		
	Measurement correction	Automatic/manual		
	Measurement mode	Movable spot, movable area (maximum, minimum and average temperatures). Isotherm. Alarm (voice, color)	Up to 4 movable spots, Up to 3 movable areas (maximum, minimum and average temperatures). Line profile. Isotherm. Temperature difference. Alarm (voice, Color)	
	Color palette	3 palettes changeable	11 palettes changeable	
	Image adjustment	Auto/manual gain and brightness		
	Setup functions	Date/time, temperature unit, language		
	Emissivity correction	Variable from 0.01 to 1.0		
	Ambient temperature correction	Automatic corrections according to user input		
	Atmospheric transmission correction	N/A	Automatic correction according to user input object distance, relative humidity, ambient temperature.	
	Image storage	Storage memory	Built-in flash memory, Up to 1000 images	Built-in flash memory, Up to 2000 images
		Storage mode	Manual single image saving	Automatic/manual single image saving
File format-thermal		JPEG, 14 bit thermal image with measurement data		
Voice annotation		N/A	Input via built-in microphone Up to 40 seconds of digital voice per image stored with image.	
Power supply	Laser pointer	Class2, 1mW/635nm (red)		
	Battery type	Li-Ion, rechargeable		
	Battery operating time	3 hours continuous operation		
	Charging system	Intelligent charger or power supply adaptor (optional) online charge		
	Power saving	Yes		
	External power	N/A	10-15V DC	
Environment	Operating temperature	-15°C ~ +50°C		
	Humidity	≤90%non-condensing		
	Encapsulation	IP54		
Physical Characteristics	Weight	0.6Kg		
	Dimensions	250mmx100mmx72mm		
Interface	External DC input	N/A	Yes	
	Audio output	N/A	Yes	
	Video output	N/A	PAL/NTSC	
	USB	Image, measurement data transfer to PC	Image, measurement Audio data transfer to PC	

The information contained in this document is subject to change without notice