

Parameter

ITEMS	TH4	TH8	
Detector characteristics	Detector type	Un-cooled FPA micro-bolometer	
	Array size/format	160x120	384x288
	Field of view/min focus distance	25°>19°/0.5m	
	Spatial resolution (IFOV)	2.73mrad	1.37mrad
	Thermal sensitivity	≤0.08°C@30°C	≤0.06°C@30°C
Image characteristics	Frame frequency	50Hz	
	Focus	Manual	
	Zoom	2x - 4x	
	Spectral range	8-14μm	
	Built-in CCD camera	3 million pixels, COMS camera modules, 2 LED lights	
Image display	LCD display	3.6" TFT LCD, 649 x 480	
	Temperature ranges	-20°C ~ +350°C	-20°C ~ +600°C
Accuracy	Accuracy	±2°C or ±2% of reading, whichever is greater	
	Measurement correction	Automatic / manual	
Measurement	Measurement mode	Up to 4 movable spots. Up to 3 movable areas (maximum, minimum and average temperatures). Up to 2 movable lines. Line profile. Isotherms. Temperature difference. Alarms (voice, color)	
	Image control	Color palette 11palettes changeable Image adjustment Auto/manual gain and brightness	
Image storage	Setup functions	Date/time, temperature unit, language	
	Emissivity correction	Variable from 0.01 to 1.0	
	Background temperature correction	Automatic corrections according to user input	
	Atmospheric transmission correction	Automatic correction according to user input object distance humidity and temperature	
	Storage card	2Gb SD Card, max 16Gb	
	Storage mode	Manual/Auto single file saving, IR and Visual image link saving	
	File format	Thermal: JPEG with original thermal measurement data included Visual: JPEG	
	Voice annotation	A built-in microphone up to 60 seconds of digital voice clip with each cared thermal imaging	
	Laser pointer	Class 2, 1mw/635nm(red), IEC 60 285	
	Power source	Battery type	Li-Ion, rechargeable
Battery operating time		3 hours continuous operation	
Battery charging mode		intelligent charger or power adaptor 12V (optional) to random charge	
Power saving		Auto dormancy and auto-shut down	
External power		10-15V DC	
Environment	Operating temperature	-15°C~ +50°C	
	Humidity	±90% non-condensing	
	Encapsulation	IP54	
	Drop resistant	2m	
Physical characteristics	Weight	1kg	
	Dimension	105x245x230mm	
	Memory slot	Micro SD card slot	
Interface	External DC input	YES	
	Video output	YES	
	USB	Image, measurement data transfer	

The information contained in this document is subject to change without notice



Application in power industry

- Clamps & Transmission equipment detection.
- Power transformation & distribution equipment detection



Application in construction

- Underground heating system
- Insulation trouble
- Hollowing detection
- Water stain damage
- Window airtightness
- Radiators and pipes



Application in technology

- Temperature distribution measurement
- Temperature change analysis
- Temperature differences judgment



Application in electrical and mechanical industry

- Security detection
- Insulation failure
- Loose interface detection
- HVAC error
- Components malfunction
- Repair verification



New energy application

- Measurement of LED chips and lights temperatures and cooling process
- Detection of Solar components hot spots, solar cells welding process, inverter and circuit
- Analysis of high and temperature distribution, temperature uniformity and differences in manufacturing



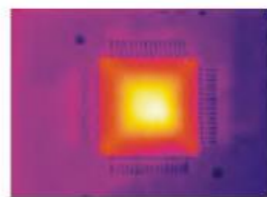
Connector overheating inspection



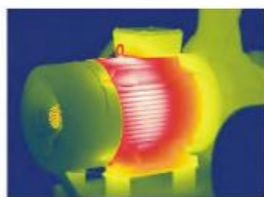
Power Distribution cabinet inspection



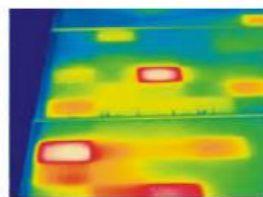
Chimney inside Wall



Chip Overheat check



Motor inspection



Solar components with polysilicon

Thermocom, Inc.

Address: 17 Topaz Drive, Nashua, NH 03062

Phone/Fax: 1-603-888-6806

Email: service@thermocom1.com

Thermo
COM
Thermography
Solutions

Professional Handheld Industry Inspection Thermal Imaging Camera

TH4 / TH8

www.thermocom1.com