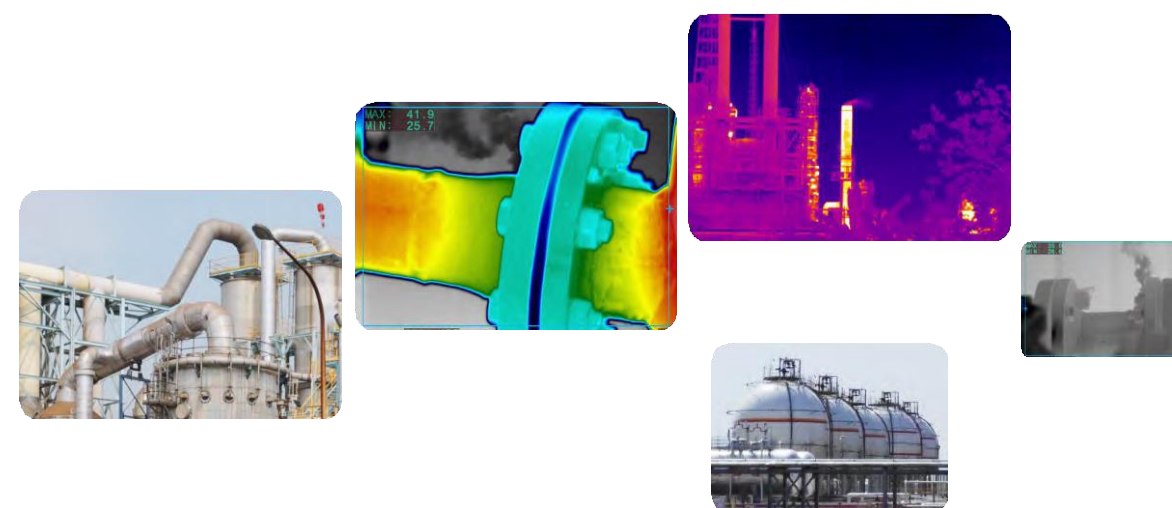


TH1000 – Gas detection camera for Methane and other volatile gaseous Compounds



Cooled detector (MWIR) 320 × 256 pixels

Start-up time less than 7 min

High sensitive mode to detect small leaks

Non-contact measurement in a safe distance

Inspection without shutting down inspected system

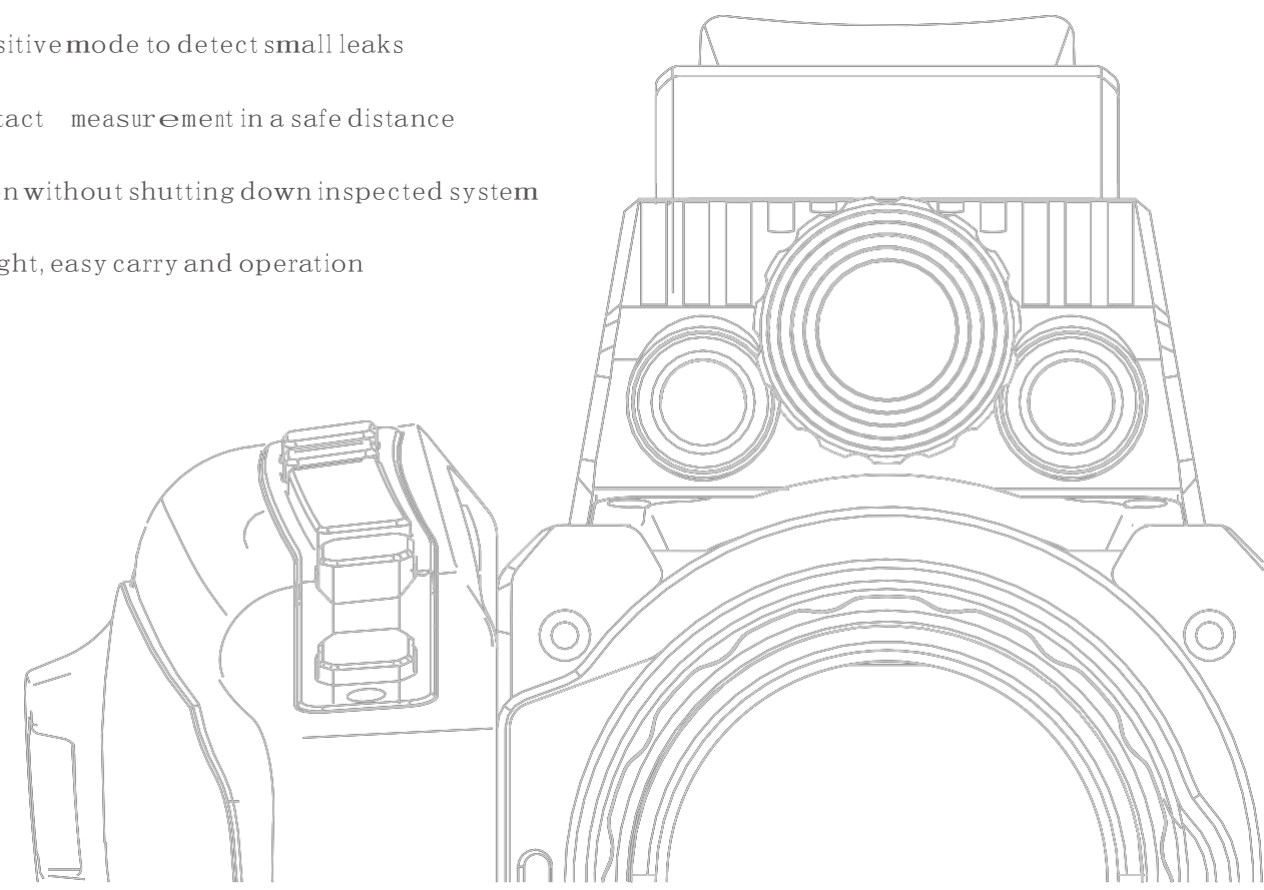
Lightweight, easy carry and operation

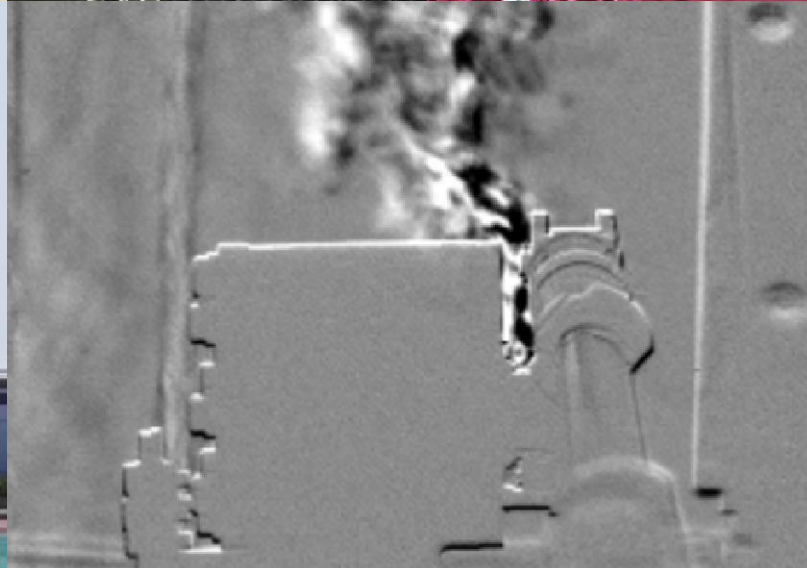
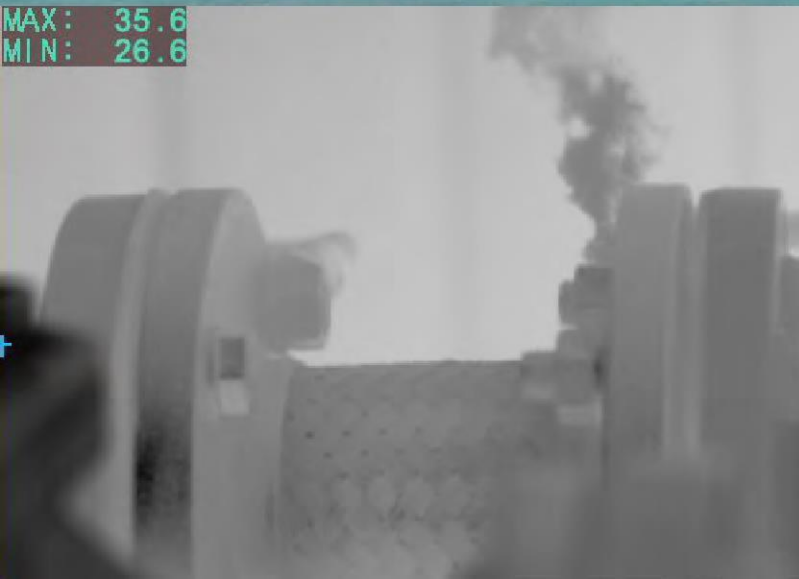
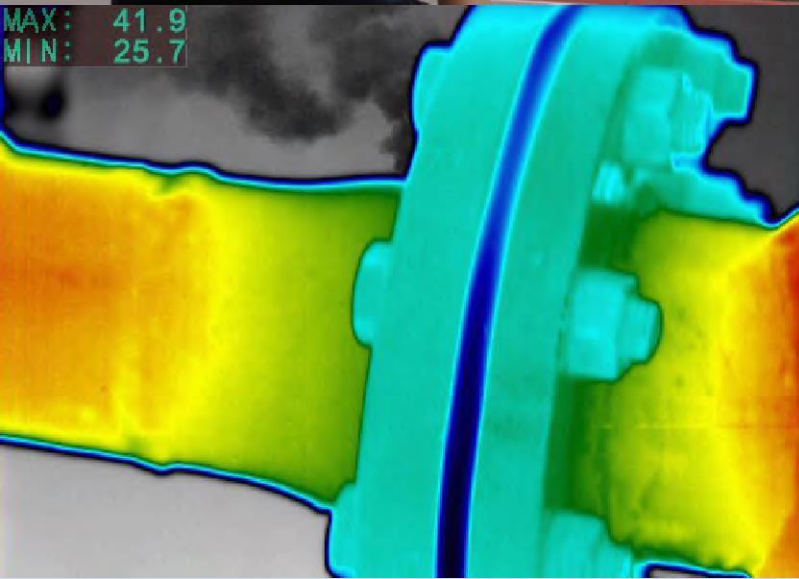
THERMOCOM INC.

Tel: +1 (561) 923- 9727

Website: <http://www.thermocom1.com>

E-mail: service@thermocom1.com





Advanced Infrared Electro Optics System Manufacturer

Company Profile

Founded in 2003, Thermocom Inc. is a high-tech enterprise specialized in various of infrared electro-optics products and system integrations. Since its inception,

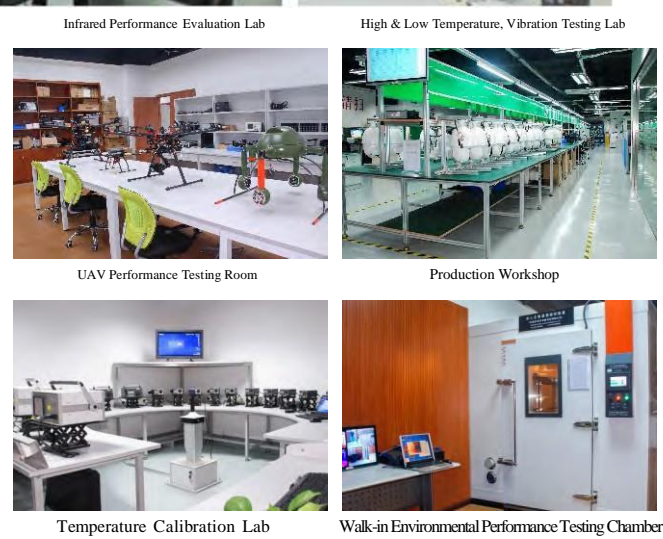


Thermocom has been focusing on the development of optoelectronic products based on infrared thermal technology with rich experience in applied research of thermal imaging system, development of related software and hardware. How to find out, identify and solve potential problems more efficiently and practically is our first consideration when designing and developing new products.

Regardless the need in regular or special applications, Thermocom people will fully dedicate with their abundant knowledge and experience to provide total thermal imaging solution from single product to completed system. Meanwhile, Thermocom also provide thermal scan inspection service for various industrial clients and the professional test report we presented is issued by ITC certified technicians.

Thermocom continues to grow up with yearly sales no matter in China mainland or the rest of the world from governments to professional companies in different industries.

Our mission is to lead the technology trends, explore infrared applications and strive to be a global leader of infrared imaging companies.



Application

TH1000 gas detection camera can detect and visualize small leaks of SF6 gas by utilizing the temperature difference of gas compounds and background and processing the image. So, it can detect gases including: Benzene, Ethanol, Ethylbenzene, Heptane, Hexane, Isoprene, Methanol, MEK, MIBK, Octane, Pentane, 1-Pentene, Toluene, Xylene, Butane, Ethane, Methane, Propane, Ethylene, and Propylene.

Experience shows that up to 84% of leaks occur in less than 1% of the plant. This means that 99 percent of what are expensive, time consuming inspection tools are being used to scan safe, leak-free components.

Using Thermocom gas detection camera you get a complete picture and can immediately exclude areas that do not need any action. This means you can achieve enormous savings in terms of time and personnel.

Another advantage is that systems do not have to be shut down during the inspection, measurements can be carried out remotely and rapidly and-most important of all-problems can be identified at an early stage.



TH1000 PRO

Gas detection camera for Methane and other volatile gaseous Compounds



Introduction

With development of industries, many companies work intensively with chemical compounds and gases before, during and after production process. Earlier methods of gas detection are time consuming and may expose inspectors to invisible and potentially harmful chemicals using traditional sniffer and probes. Thermocom TH1000 are able to quickly visualize and pinpoint VOC gases leak in the application of petrochemical industry, oil & gas industry, refinery, rescue and firefighting department etc.

Thermocom gas detection camera is an extremely important tool for tracing potential faults.

3.5" LCD

High definition view finder / high resolution 3.5" LCD display

320 X 256 PIXELS

Cooled detector (MIRW) 320X256 pixels

<7 min

Start-up time less than 7 min with new design of core

SENSITIVITY 0.001 ml/s

Capable of detecting gas leak as small as 0.001ml/s with multi-levels high sensitive mode adjustment.

2 IN 1

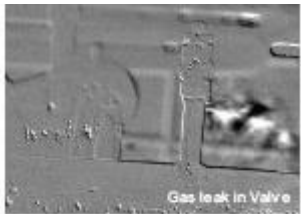
Gas detection & accurate temperature measurement

REMOTE DETECTION

Inspection without shutting down inspected system

EASY TO USE

Capture images directly without light assistance and reflection background.



Gas leak in Valve



Gas leak in natural gas pipeline



Volatile liquid leak in gas station



Leaks in liquefied gas bottle

TECHNICAL SPECIFICATIONS

| PERFORMANCE | |
|-----------------------------|---|
| Field of view | 11' x 8.8' /24' x 18' |
| Thermal sensitivity | 0. 015°C at 30°C |
| Spatial resolution (IFOV) | 0.6mrad |
| Focus | Auto / Manual |
| Electronic zoom function | 1X~8X |
| Responsivity | 0.001ml/s |
| Image frequency | 50Hz/60Hz |
| Detector type | Cooled detector 320×256 pixels |
| Spectral range | 3. 2~3. 5 μm |
| Startup time | < 7 min |
| IMAGE PRESENTATION | |
| CCD camera performance | Build-in 5million pixels digital camera |
| Video output | AV |
| External display | 3.5" LCD with screen |
| View finder | Build-in TFT LCD with high resolution (800×600 pixels) |
| Palette | 6 palettes |
| MEASUREMENT | |
| Temperature range | -20°C~+350°C |
| Accuracy | ±2°C or ±2% of reading |
| Analysis | Automatic tracking Max / with temperature data Class 2 |
| Emissivity correction | |
| Variable from 0.01 to 1.0 | |
| Classification | 32G |
| IMAGE STORAGE | |
| Removable SD-Card | Li-ion, rechargeable, field replaceable |
| BATTERY SYSTEM | |
| Type | 2-bay intelligent charger (Optional: External power cable) |
| Operating time | |
| Charging system | ≤2.40kg |
| PHYSICAL CHARACTERISTICS | |
| Weight (Include battery) | |
| Size (L×W×H) | -10° C ~ 40° C |
| ENVIRONMENTAL SPECIFICATION | |
| Operating temperature range | Operating and storage 10% to 95%, non-condensing |
| Storage temperature range | IP54, IEC 529 |
| Humidity | |
| Encapsulation | |
| Shock | 25G, IEC 68-2-29 |
| Vibration | 2.5G, IEC 68-2-6 |
| Type | Benzene, Ethanol, Ethylbenzene , Heptane, Hexane , Isoprene, Methanol, MEK, MIBK, Octane, Pentane, 1-Pentene, Toluene, Xylene, Butane, Ethane, Methane, Propane, Ethylene, Propylene. |



TH1000 PRO

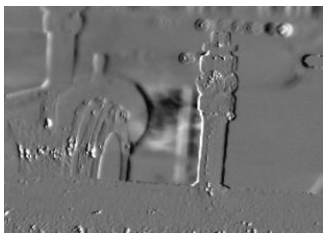
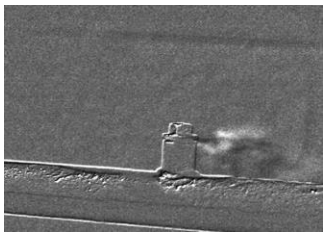
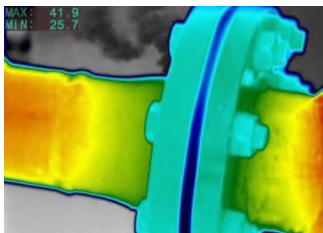
Gas detection camera for Methane and other voltage

| | |
|--------------------------|-------------------|
| Thermal sensitivity | 0.015°C at 30°C |
| Min. focus distance | 3m/0.5m/0.3m/0.2m |
| Focus | Auto / Manual |
| Electronic zoom function | 1X~8X |
| Responsivity | 0.001ml/s |
| Weight (include battery) | ≤2.6Kg |



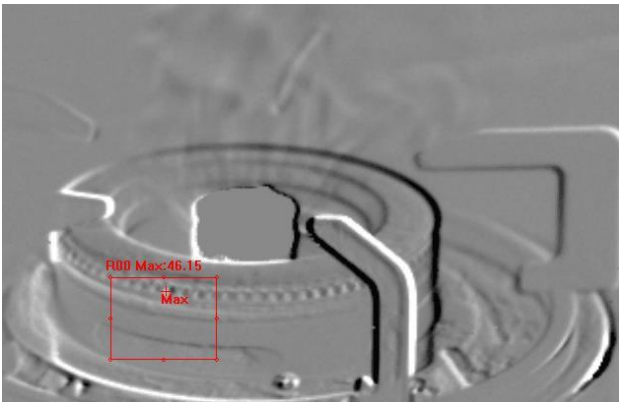
Optional lens for different distance inspections

- ☐ High definition view finder /high resolution 3.5''LCD display
- ☐ Cooled detector (QWIP) 320X256 pixels
- ☐ Start-up time less than 7 min with new design of
- ☐ Core Capable of detecting gas leak as small as 0.001ml/s multi-levels high sensitive mode adjustment.
- ☐ With Gas detection & accurate temperature measurement
- ☐ Inspection without shutting down inspected system
- ☐ Capture images directly without light assistance and reflection background.
- ☐ With GPS information
- ☐ WIFI for connection and transmission

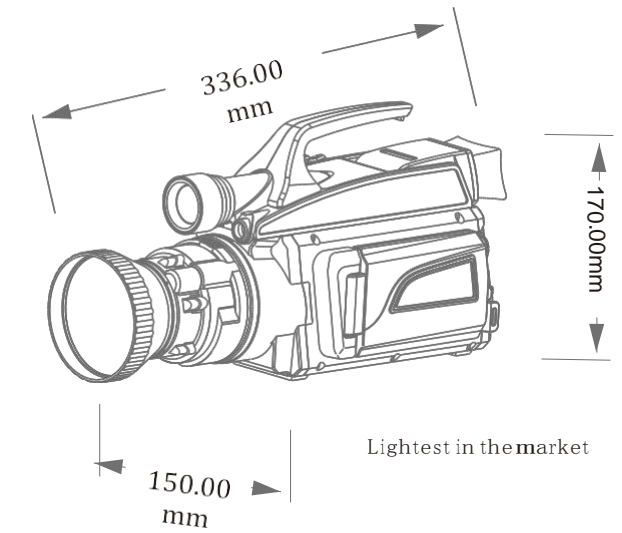
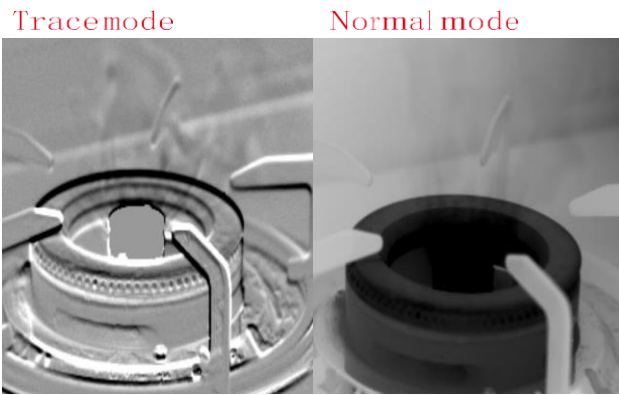


Features of TH1000 & TH1000 Pro

1. Gas detection and temperature measurement
2. Non-contact inspection in a safe distance



3. High sensitive mode for small leak detection.
4. lightweight: TH800 ≤2.40Kg (with battery)
TH800pro ≤2.60Kg (with battery)



5. Multiple palette
6. Adaptabl to almost all working environment without special background

